



West of
England
Thematic
Society

Newsletter No.10 March 2001

Society Officers

Chairman – Mrs.M.Claydon Tel 01398 331731 email

mary.claydon@talk21.com

Secretary – Alison Burdon email piburden@talk21.com

Treasurer – Leslie Marley Tel 01752 816197

News Co-ordinator - Tony Smith 20 Bracken Close Honiton Devon EX14 2YS Tel 01404 46358

Editor - Jim Wigmore 19 Riversmeet Appledore Bideford Devon EX39 1RE Tel 01237 476859 email istug@aol.com

Packet Secretary – Pamela McDowall Tel 01392 430782

WHY SUCH A LATE DELIVERY FOR OUR NON-ROYAL LADIES?

Bearing in mind it was a female head – Victoria’s of course - which adorned the worlds first postage stamps and that since 1952 another Queen – our much respected Elizabeth II - has appeared on every British stamp, it’s hard to believe that it wasn’t until 1968 that a non-Royal lady was honoured on a stamp of Great Britain.



Perhaps not surprisingly it was that champion of women’s rights, Mrs Emmelene Pankhurst, though it was a statue of her rather than a painting or photograph which appeared in the Anniversaries set (SG768).

Jersey however managed a portrait of her in its 1996 Europa issue. In 1970 another GB Anniversaries issue (SG822) carried a



sketch of nursing pioneer Florence Nightingale attending patients.

The anniversary was the wounded soldiers in the of British nursing. years earlier on an European countries have Rican stamp (SG409) pairs Norfolk born nurse Cavel is

Question
Which non-royal woman has appeared on two GB Stamps?
Answer on Page 2

soldiers from both sides, in World War 1, though when captured by the Germans in Belgium she was shot. Belgium remembered her with a stamp of 1957 (SG1627) but she has yet to feature on a British stamp. Doctors and nurses figure on many countries stamps, though British born Dr Emily Stowe and Dr Elizabeth Blackwell from Bristol have been ignored by their mother land while being honoured by Canada and the USA where they worked. Elizabeth was Americas first qualified woman doctor.

With stamp issues increasing – some 200 carried Victoria’s head in 62 years and already Elizabeth II has appeared on around 2000 in 49 years – there has to be a rise, albeit small, in the number of women on British stamps. Dedication, determination, courage, and skill have all been shown by scores of women since Mrs Pankhurst’s philatelic first, yet it is the worlds of art and entertainment which have featured most in GB commemoratives.

Authoresses Charlotte Bronte, George (yes, a woman) Eliot, Emily Bronte, and Elizabeth Gaskell were featured in 1980 (SG1125-8), while in 1996 Daphne Du Maurier joined ladies with different claims to fame, scientist Professor Dorothy Hodgkin, ballet star Margot Fonteyn, athletics official Marea Harman, and sculptress Elizabeth Frink, in another set.

Searching the catalogue can also find you a 1998 cartoon of Joyce Grenfell and Muffin the Mules old TV partner Annette Mills (SG1940).



The Bronte Sisters, Mrs Gaskell, and George Eliot (SG1125-8)



Dame Vera Lynn, Britain's wartime singing inspiration, was featured on the cover of a recent Prestige booklet and another booklet from the same series featured Violette Szabo who died helping Britain's World War II effort.

Our Postal authorities may have been slow off the mark by honouring British women, but why not show your admiration lady WETS members by forming a collection. Add some women on foreign issues and you have a potentially splendid and very large theme.



Seeing Double
Actress Vivien Leigh was in the 1985 Film Year set and the 1996 Cinema

AGM Votes for Extra Get Together

An interesting and lively meeting of WETS took place at Buckfastleigh Town Hall on November 11th with more than 20 members attending despite bad weather and a "flu bug". Members agreed that with the continuing enthusiasm of collectors the coming years programme should be extended to three meetings per year, the AGM being backed by normal Thematic Day in Cornwall and a new gathering in Somerset

Full dates and venues will be released later, perhaps via the WETS Newsletter, launched by Jim Wigmore and Tony Smith, who were congratulated at the AGM for producing such an attractive and interesting debut publication. The years other achievement was the launching of a packet circuit. Organiser Pamela McDowell's hard work and enthusiasm deserve more books for the future, and not just stamps. Thematic philately involves all types of postal material, so let Pamela have covers, cancels etc. too.

Treasurer Lesley Marley when presenting the accounts suggested the subscription be raised by £1.00 to £2.50 per year and this was unanimously agreed. The cash position is healthy, but the rise will keep the money situation stable.

Chairman Mary Claydon, Secretary Alison Burden, and Treasurer Leslie Marley were all re-elected.

LETS KEEP THOSE PACKETS ON THE MOVE

Packets 1 and 2 went around fairly quickly and smoothly but packet 3 got caught up with absences, illnesses, plus the great floods, and railway chaos, and has still not come home to roost.

However now that both the climate and the railway system seem to have settled down, packets 4 and 5 have started on their rounds, and it is hoped their journeys will be more successful.

To help you in making up booklets for the packet in future, you may be interested in the listing of member's interests below. New booklets for the packet are always required, please submit any that you can make up as soon as possible.

- | | | |
|--|--------------------------------|---------------------------|
| Tea | European Royalty | Named Women |
| 20 th Century People/Events (Mint Only) | Birds of GB and Western Europe | Birds (Feathered) |
| Whales and Dolphins | Antarctica | Zodiac and Lunar New Year |
| Christmas | Heraldry | Rocks and Minerals |
| United States of America | Butterflies | Reptiles and Amphibians |
| Pigs | Czwsław Slania | Submarines |
| Fire Brigades and Services | Scouts and Guides | Explorers |
| Explorers Ships and Maps | Ancient Greece | Queens Portraits/Events |
| Orchids | Cats | Australia |
| The Evolution of Railways | Cypriot History | Birds of Prey |
| Owls | Dogs | Literature |
| Science | Oriental Art | Fairy Tales |
| Japan | | |

DON'T FORGET to support the WETS Roadshow, current dates are: - April 9th Brixham, June 6th Dorchester, June 12th Minehead, 17th October Exeter. If you are giving a thematic display ensure it is included in future diary entries.

A ROYAL RECORD!



For someone who didn't appear on a single stamp when she married into the British royal family in 1923, the Queen Mother has gone on to win a very special place in philately as well as in the hearts of the British people.

Her 100th birthday issues in August - close to 100 of them throughout the Commonwealth - make her the oldest person to be featured on postage stamps while still alive. Do you know a rival contender? The popularity of the former Lady Elizabeth Bowes-Lyon shows no sign of declining in the stamp album, or elsewhere.



Her whole life story was told via the sets of for her 80th and 90th birthdays, now we have even more. And all this for someone who when she married the Duke of York had no idea she was to become Queen.

The Duke of Windsor's abdication changed her whole life plan and she made her stamp debut on the 1937 Coronation issue of Great Britain and the Commonwealth.

The Netherlands Queen Mother, Juliana is probably the nearest person age wise still featured on stamps. She is 92. Juliana first appeared on Dutch stamps in 1948 when she succeeded her mother Queen Wilhelmina and was on the definitives of Holland and its overseas territories until she stepped down from the throne in favour of her daughter Queen Beatrix in 1980. In 1990 Juliana appeared on a commemorative honouring the House of Orange which also showed her daughter and her own mother Wilhelmina who had lived to be 82.



Ask anyone over 60 to name the Queen who won the affection of so many at our own Queen Elizabeth II coronation, and they are sure to remember Queen Salote. For many none stamp collectors she put her island of Tonga on the map before dying in 1965 aged 65.

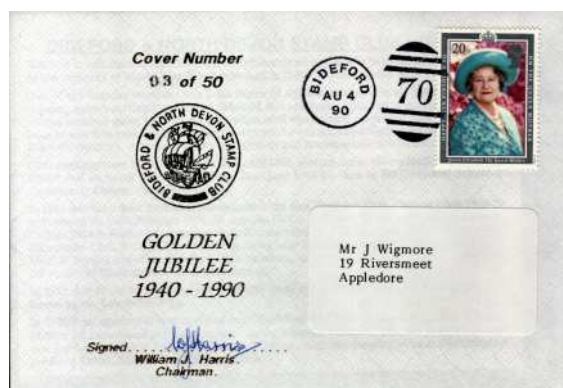
Our own Queen Victoria was 82 when she died in 1901 and is best remembered by many for her place in philately, the worlds very first postage stamp. Now we have another royal record holder for the album.

The year 1990 was doubly important for Devon "Royal" collectors. It was the 90th Birthday of Queen Elizabeth the Queen Mother, and it was the 50th Year of Bideford and North Devon Stamp Club's existence. Since the Queen Mothers Birthday was on a Saturday this was the date chosen by Bideford Club to have their Annual Exhibition and Birthday Celebration.

To mark the occasion the Bideford Club in conjunction with the Post Office had produced a replica of the original Bideford Duplex cancel.

Each member of the club was to receive a commemorative cover printed in gold with the Queen Mothers Commemorative stamp and duplex cancel applied by the Post Office, and all covers were signed by the then chairman Bill Harris. One of the gold printed covers is reproduced above (*the gold leaf has not shown up too well*). A little known fact outside Bideford Club is that one of these gold covers was offered to Queen Elizabeth the Queen Mother and accepted for the Royal Collection.

Other covers were produced at the time printed in blue, and there were 6 limited issue varieties all carrying stamps of the day, and cancelled with the Bideford Duplex by the Post Office. The Post Office bought a full set of all the varieties for their own reference collection. I feel sure these unique covers would fit into a number of thematic collections, but did you know of their existence, and more importantly, have you ever seen them?



COMING EVENTS - Plymouth Philatelic Society are celebrating their 125th Anniversary with a Stamp Exhibition and Fair on Saturday 19th May 2001 in the Main Hall of Plymouth University. Open from 10.00 to 16.00. As well as the Wessex Competition Entries on display 15 dealers have booked, some new to the area, to cater for all your philatelic needs. Cavendish Auctions will be attending, and refreshments will be available all day.

SOCIAL PHILATELY – Will it Catch On?

Not so long ago Thematics – or Topicals if you were on the other side of the Atlantic – was the controversial newcomer to stamp collecting. Now another “new boy” is about to enter the fray – Social Philately! It was included in the recent Glasgow 2000 get together of collectors and is said to be a bridge between Postal History and Thematics.

Many things which cannot be included in a thematic collection, display or competition entry can, it seems, be kept under the Social Philately banner.

WETS Chairman Mary Claydon looks back after reading a leaflet written by a specialist in the new field Pat Grimwood-Taylor (*of Cavendish Auctions*), and quotes from it at length.

Having had my interest aroused initially by an article written by Margaret Morris in the December 2000 Themescene.

I contacted Pat Grimwood-Taylor who I knew was not only interested in this aspect of collecting but has a collection herself. Pat very kindly sent me a leaflet which was available at 'The Stamp Show 200 where there was a workshop on this aspect of philately. I now quote from this leaflet.

'There are two important differences between Social Philately and other philatelic collecting. You do not necessarily have to be an experienced philatelist and you can include all types of non-philatelic material and ephemera (*such as maps, prints, coins, medals etc.*) in your collection.

You can tell the story of the development of a town or country by using stamps, letters and documents. Likewise the historical background to an important event (*e.g. the Olympic Games, the American Revolution, the English Civil War, the Siege of Paris etc*) can be brought to life in this type of collection.

Social Conventions such as sending Valentines, or the development of a business or industry (such as timber, textile, mining or brewing industries) can also be subjects for a collection of Social Philately.

WHAT CAN I COLLECT. The simple answer is 'almost anything'. There are practical considerations of how to display your material, especially if you are entering your collection as a competitive exhibit, but solely from the point of view of collecting the scope of material is limited only by your imagination. (Here I have to say that this applies to thematics as well - and actually every other form of collection).

The items suggested in the leaflet that you might collect are: - Stamps, mint or *used (now that is something to give us thought and I wonder if you can use both in an exhibit)* picture postcards (*and I believe you can use these*) Postal stationery, letters and/or their envelopes. Maps and photographs, prints or engravings, printed documents and leaflets, coins and medals, indentures, bills etc., jewellery, fans, tickets, tokens etc. Letter boxes, stamp boxes, pens, pencils, seals and wafers.

The leaflet ends stating that "The international body which governs philately world-wide is considering proposals for the inclusion of Social Philately as a recognised competitive class. Interest is already building in Europe and the U.S.A. and we are hopeful that it will not be too long before it is regularly seen at exhibitions both here and overseas".

Pat Grimwood-Taylor is giving workshops on Social Philately - so far not in our area though she tells me in her letter she may be giving a talk to the Bristol Philatelic Society if they can finalise a date. I would be interested in going to this would anyone else?. Or I wonder if we could interest Pat in giving a talk to our Society if enough people are interested. You know my phone number and address. Let me know. *Mary Claydon.*



The British Thematic Associations annual auction catalogue is now available.

Send an S.A.E. to Bob Lee 57 Church Rise, Chessington, Surrey KT9 2HA

**YOUR NEWSLETTER
NEEDS INPUT FROM**

YOU

Relax – When we get home we are going to find out all about Social Philately.